

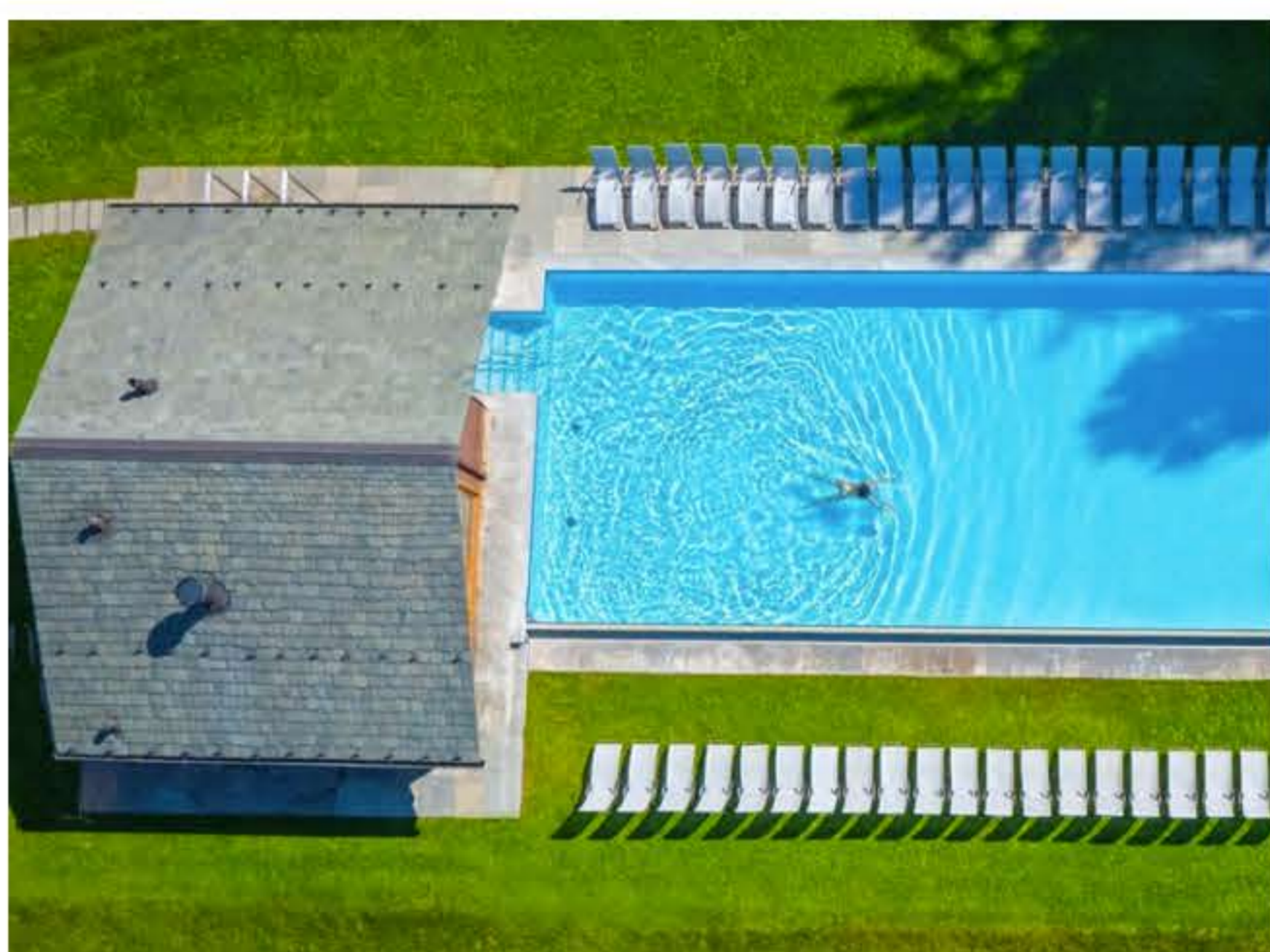
Fiam for QC Terme - Bagni di Bormio

Read 36 times

18/07/2017 - At Bormio, in a stylishly enchanting place, where time seems to be suspended in perfect equilibrium, between the sky and the reflections on the water, between the rocks of history and the healthy vapours of modernity is located the QC Terme - Bagni di Bormio complex.



Movida and Samba by Fiam, with the deft touch of their discreet but solid forms, offer comfort and relief without getting in the way of the refinement of the location, welcoming stress and tiredness to transform them into relaxation.



In contract furnishings, Fiam emerges effortlessly because of the ability to make large quantities without losing any attention to detail, replicating its own self in Fiam quality and doubling performance, adapting itself to the public that has to be welcomed, to the needs of architects and designers, and mindful of the demands placed on public spaces.



Movida "zero gravity armchair"

Movida is a "Zero Gravity armchair" with exclusive design, reclinable in various positions, and made with great attention to quality and comfort. In the raised position the legs are brought up to heart height, helping relaxation and good circulation. As a result of the efficient adjustment system, it is possible to settle into the desired position and set it by a simple touch of a finger. The headrest, included with Movida, can be adjusted as wished, or removed.

The high-resistance elastic system runs handily along the tube to ensure every single body part has the right support and well-being.

It has been developed to allow even those with limited mobility to sit down and stand up with the minimum of effort, also due to the footrest which rests solidly on the ground.

Incredibly easy to clean and long-lasting even after sustained use and being exposed to atmospheric variations and UV rays.



Samba swinging lounger

The Samba swinging lounger is reclinable in two positions. The raised-leg position favours good blood circulation. It's easy to put away in winter, thanks to its original space-saving feature. The frame can come in toughened steel alloy, coated with thermosetting powder, to guarantee optimum protection; or in toughened and highresistance lightweight aluminium alloy. The seat is in the Italian micro-mesh Texfil, which combines great seating comfort with exceptional resistance to the elements.

FIAM on ARCHIPRODUCTS



Fiam for QC Terme - Bagni di Bormio